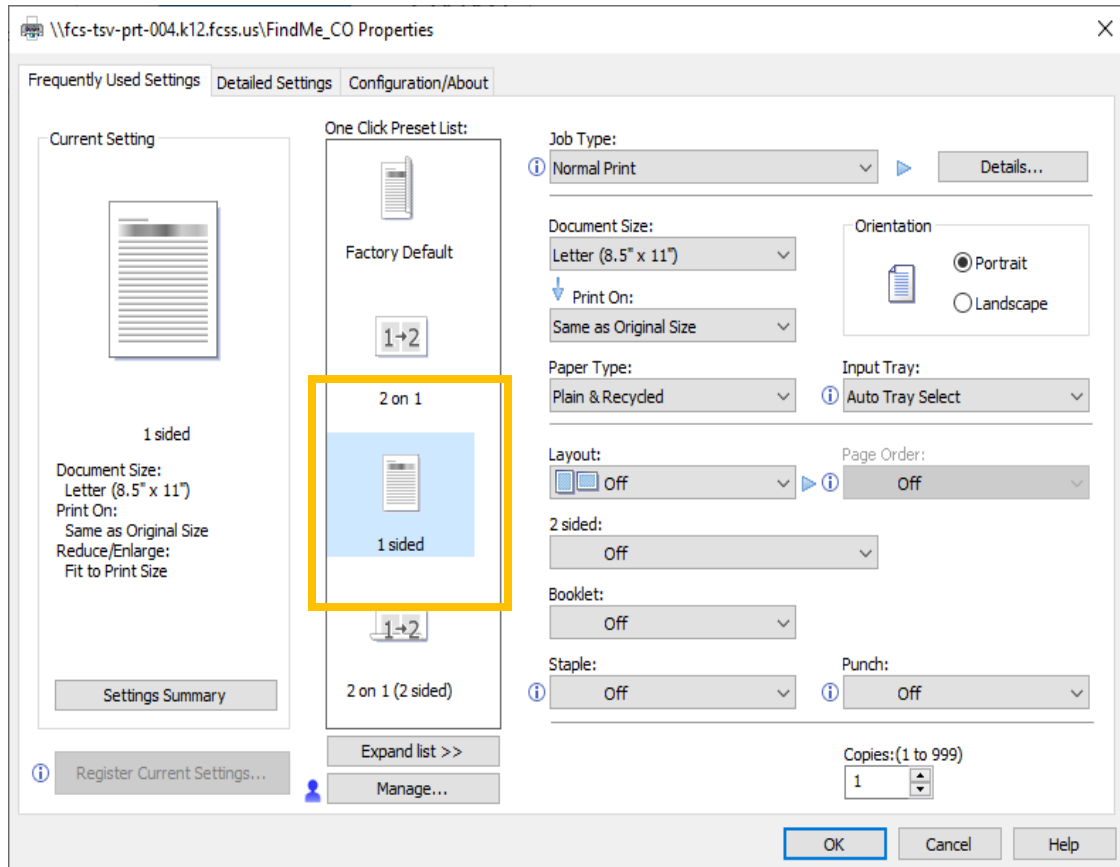


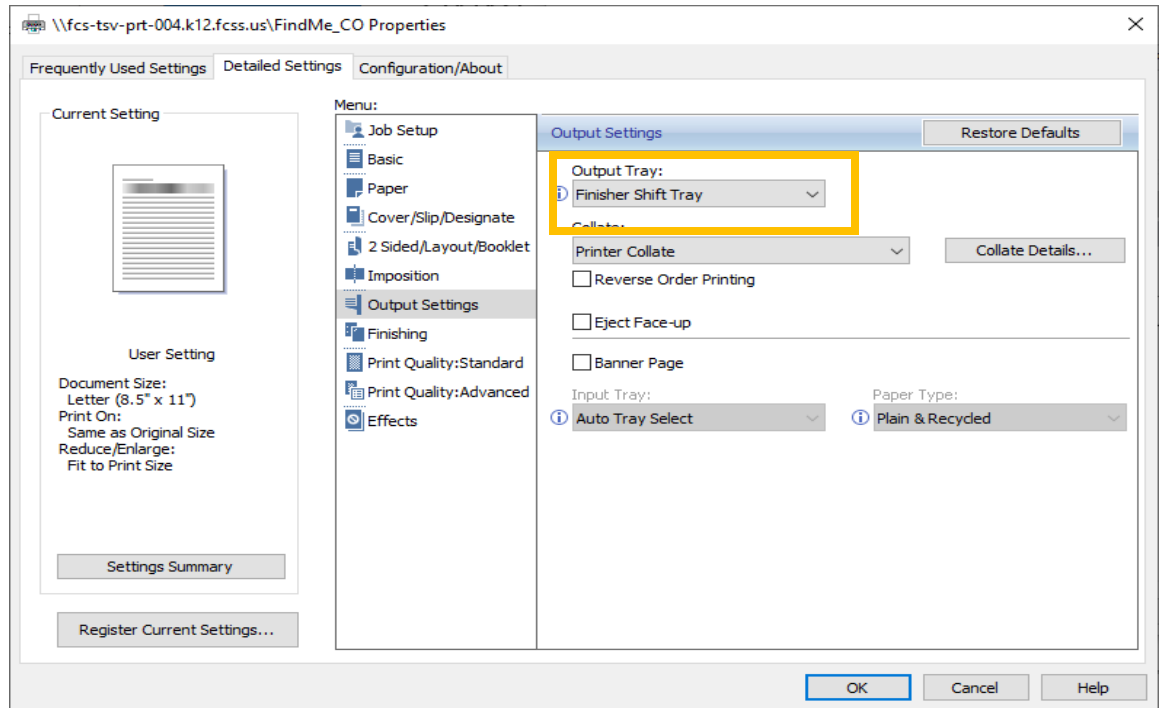
## Print to FindMe Staple Feature Instructions

- Select **Print** within Application (**Note: Some Applications steps might differ**)
- Select **Print Options**
- Select **Properties**
- **Frequently Used Settings Tab** (1 Sided) **Choose your preference**

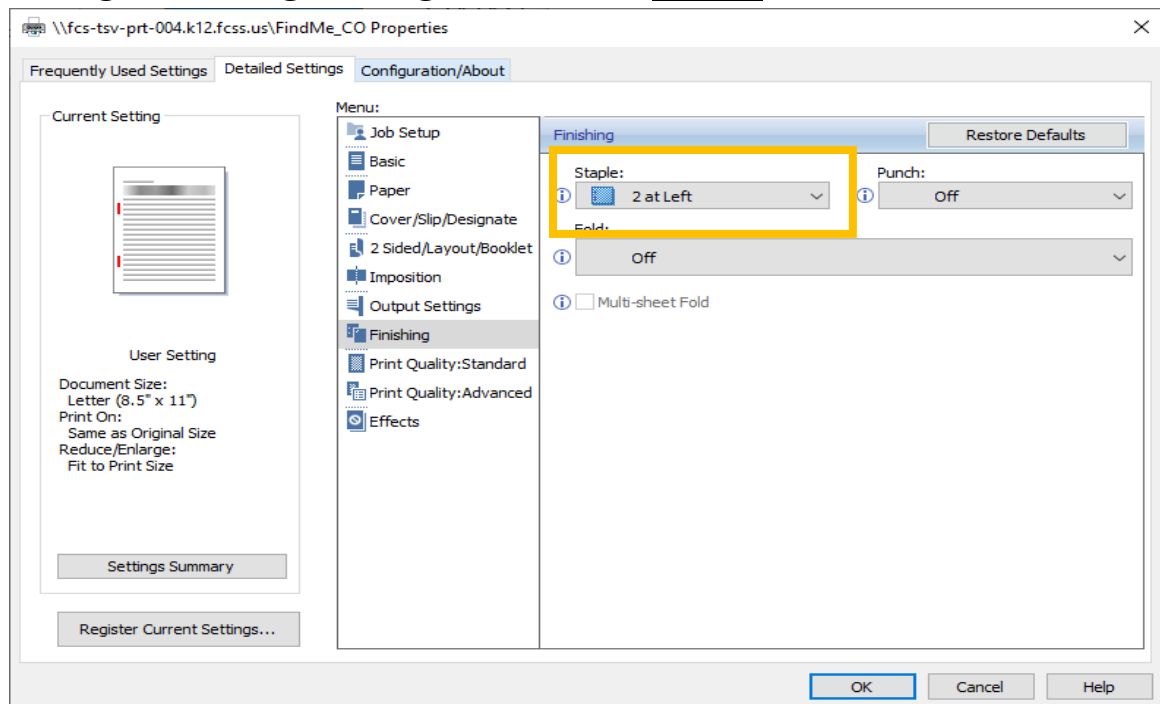


- **Detailed Settings Tab**

A. Change ***Output Settings*** to ***Finisher Shift Tray***



B. Change ***Finishing Settings*** to desired ***Staple*** selection



C. Last, Select ***OK*** and ***Print***.